

26" OPEN SIDES - ROTATABLE TOP



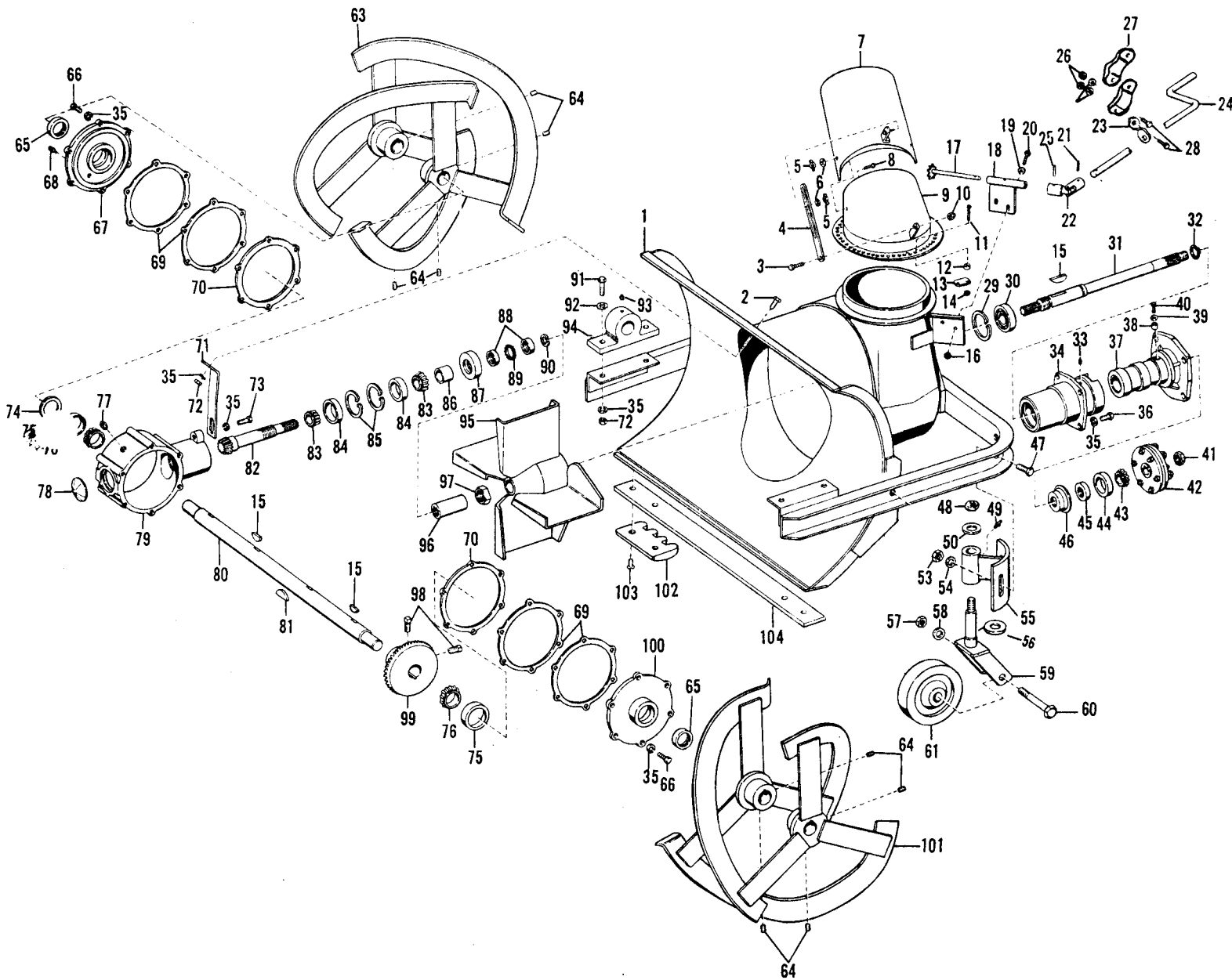
A Division of Studebaker Corporation

ILLUSTRATED Parts List

PRINTED IN U. S. A.

DELUXE SNOW BLOWER
Model Nr. MA - 115
Effective Date: July 1, 1967
Form Number: PL - 134

To continue its program of quality and design improvement, the manufacturer reserves the right to change specifications, designs or prices without notice and without incurring obligation.



<u>Code</u>	<u>Part No.</u>	<u>Description</u>	<u>Code</u>	<u>Part No.</u>	<u>Description</u>
1	SB 359	Body Weldment	54	308-W	Washer
2	110-S	Screw	55	SB 369	Adj. Caster Bracket
3	183-S	Screw	56	414-W	Washer
4	6310	Deflector Adj. Brace	57	227-N	Nut
5	L 819-F	Wing Nut	58	411-W	Washer
6	401-W	Washer	59	S 105	Caster Fork
7	6305	Swivel Chute Deflector	60	S 317	Caster Axle
8	4 ST 8 C	Machine Screw	61	S 109 <i>9628</i>	Caster Wheel
9	SB 376	Swivel Chute	63	SB-323/RAY	Reel Comp. Weld. Assy. R
10	242-N	Elastic Stop Nut	64	808-A	Set Screw
11	8 SR 10 C	Screw	65	OS 108 <i>14-066</i>	Oil Seal
12	SB 386	Swivel Spacer	66	121-S	Screw
13	SB 385	Swivel Plate	67	SB 102-R	Bearing Hsg./Grease Plug
14	FN 8 C	Nut	68	701-P	Pipe Plug
15	508-K	Woodruff Key	69	SB 335-S	Shim
16	242-N	Nut	70	SB 335	Gear Housing Gaskets
17	SB 380	Shaft & Pinion	71	SB 319	Brace
18	SB 383	Bearing Support	72	205-N	Nut
19	401-W	Washer	73	110-S	Brace Bolt
20	183-S	Hex Head Cap Screw	74	SB 336	Adjusting Shims
21	4 RP 6	Roll Pin	75	RB 110-R	Bearing Cup
22	SA 162	Universal Joint	76	RB 106-C	Bearing Cone
23	SB 392	Crank Bracket	77	702-P	Pipe Plug
24	SB 387	Crank	78	SB 334	Expansion Plug
25	606-C	Cotter Pin	79	SB 101	Gear Housing
26	NEO 5 C	Nut	80	SB 305	Reel Shaft
27	7408	Clamp (2Pcs)	81	509-K	Woodruff Key
28	154-S	Screw	82	SB 351 <i>13-305</i>	Bevel Pinion Shaft
29	RR 207	Retaining Ring	83	RB 107/C	Bearing Cone
30	BB 106	Ball Bearing	84	3147-R	Bearing Cup
31	SB 300	Fan Shaft <i>13-269</i>	85	RR 206	Retaining Ring
32	RR 105	Retaining Ring	86	SB 324	Spacer
33	903-G	Grease Fitting	87	OS 109	Oil Seal
34	SB 354	Swivel Casting	88	SB 327	Bearing Locknut
35	305-W	Washer	89	SB 333	Bearing Nut Lock Washer
36	110-S	Screw	90	RR 201	Retaining Ring
37	SB 355	Drive Shaft Hsg.	91	112-S	Screw
38	SB 352	Detent	92	403-W	Washer
39	304-W	Washer	93	903-G	Grease Fitting
40	126-S	Screw	94	SB 329	Pillow Block Bearing
41	227-N	Nut	95	SB 353 <i>13306 17301</i>	Blower Fan
42	NN	Slip Clutch Assy./SC33SA	96	SB 304 <i>13216</i>	Coupling
43	R 113 C	Bearing Cone	97	225-N	Esna. Hex Nut
44	RB 113.R	Bearing Cup	98	807-A	Set Screw
45	OS 112	Oil Seal	99	SB 301 <i>13-270</i>	Bevel Gear
46	A-474	Oil Seal Retainer	100	SB 102-L	Bearing Hsg.w/o grease plug hole
47	152-S	Screw	101	SB 323/LAY	Reel Comp. Weld. Assy/ L.H.
48	227-N	Nut	102	SB 104	Skid
49	902-G	Grease Fitting	103	139-S	Screw
50	411-W	Washer	104 <i>13302</i>	SB 337	Wearing Strip (Optional)
53	211-N	Nut	NS	141-S	Screw for SB 337 (Optional)