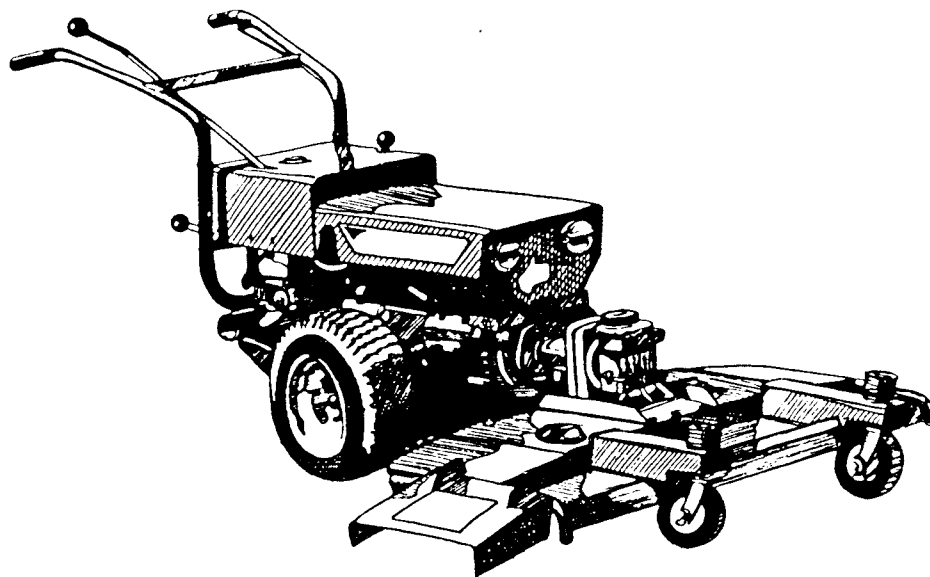


MOUNTAINEER



60" ROTARY MOWER MANUAL

MODEL: 885

Serial # 13941

UNITED FARM TOOLS, INC.
Lawn & Garden Division
4540 W. Washington Street
Charleston, WV 25313

Phone: 304-744-5865
304-744-5899

SAFETY SLIP CLUTCH

The clutch is located on the drive end of the horizontal mower drive shaft, extending into the tractor. The purpose of the slip clutch is to prevent shock from being transferred to the tractor should the revolving blades strike a solid object. The clutch as been adjusted at the factory and should not need readjusting. However, should the mower drive slip in normal conditions, the slip clutch may need to be adjusted or tightened. To adjust, first loosen the six lock nuts on the six spring bolts; then tighten the spring bolts (CW) taking care to tighten all six the same amount; then retighten the six lock nuts. With a torque wrench, proper setting of the six spring bolts is 8/10 foot pounds.

BLADE HEIGHT ADJUSTMENTS

- A. Blade/Sprindle - Blade height on each spindle can be adjusted independently of each other. First, remove right hand jam nut (Item #5) from spindle shaft. Raise or lower each blade by changing the number of ground spacers above and below blade.
- B. Deck Height Adjustment - To level deck with tractors which utilize different diameter tires, wheel caster frame (Item #3) can be raised or lowered by changing the number of 3/4" washers above or below the caster arm frame extension of the welded deck.

HINT: In very high orchard grass which would normally choke the mower down, you may want to raise the mower deck to its highest position and make a first pass. A second pass (if required) could be made in standard level operating position.

BLADE SHARPENING

Inspect each blade for sharpness before each operation. Resharpener and balance them when they become dull. When blades are removed for sharpening, inspect for surface cracks. Discard any blade that has evidence of metal fatigue and/or cracks. Pay particular attention to the metal around the center hole.

BELT REPLACEMENT

- A. Remove mower from the tractor and take off left and right belt covers.
- B. Unbolt deck mount channel (Item #22) from deck (Item #14).
- C. Release tension on idler pulleys.
- D. Belts should slip down off drive sheave (2 groove), and free from spindle pulley.
- E. Replace belts. View mower from operator's position.
 - 1. Right belt-Top belt on two groove sheave, put on first.
 - 2. Left belt-Bottom belt on two groove sheave, put on second.

**** WARNING ****

For shipping, mower discharge (Item #31) is partially disassembled. Before mounting mower to tractor, mower discharge MUST be lowered down to operating position, and bolted to side of mower deck with 3/8" Hex bolt, nut and lockwasher.

NEVER OPERATE THIS MOWER UNLESS DISCHARGE IS IN THE LOWERED POSITION. Failure to do this constitutes an unsafe condition, which may cause serious harm to yourself or a bystander, for which the manufacturer could assume no liability.

Except for securing the discharge in the correct operating position and adding lubricant to the drive gear box, the 40" mower comes fully assembled.

LUBRICATION

- A. Gear Box - With mower deck in a level position, remove both the fill port plug (top of main gear box, Item #23) and the level plug (side of main gear box). Fill through top port heavy weight gear oil of 140 viscosity until oil runs out side port.

Check oil level periodically. The rotating gears splash this lubricant to the gears and bearings located in the gear box assembly.

The tapered bearing directly behind the slip clutch assembly is lubricated from the tractor with an oil seal to the front of the bearing preventing an exchange of oil between the tractor and mower.

- B. Mower Spindles - Both mower spindles are pre-lubricated at the factory. After every 8 HOURS of operation (or more often in severe dust and/or grit conditions), add #2 grease until spindle housing is full, and seepage can be detected out the end of the housing. CAUTION, do not overgrease and damage seal. Grease fittings are located either on the rear side of the spindle housing under the deck -- or through the opening in the belt guard (Item #13) in the end of spindle shaft.
- C. Gauge Wheels - Gauge wheels are lubricated after every 8 HOURS of operation through grease fittings on the wheel hubs. Add grease until it comes out around the bushing.
- D. Gauge Wheel Spindle - Spindle bushing should be lubricated after 8 HOURS of operation through fitting at the front of wheel support extension. Apply grease until it comes out around the spindle.
- E. Swivel Housings - Add #2 grease through fitting periodically until grease seeps between outside and inside swivel castings. CAUTION, don't overgrease and damage oil seals.

BELT IDLER ADJUSTMENT

- A. Hook spring through hole in end of adjusting rod.
- B. Insert rod into adjusting tabs and thread 3/8 nut onto the rod until proper tension is achieved. A 3/8" jam nut is then placed onto the adjusting rod to retain tension.
- C. Proper belt tension should give approximate 1/2" depression when adjusted.

SAFETY

A ROTARY MOWER OF ANY SIZE OR MAKE IS A DANGEROUS TOOL. TREAT IT AS SUCH.

READ THE TRACTOR OWNERS MANUAL. Review the safety rules for safe tractor operation.

Keep safety devices (belt covers) and discharge shield in place at all times.

Disengage power to attachment, turn tractor off before leaving operator's position to make any adjustment or clear mower.

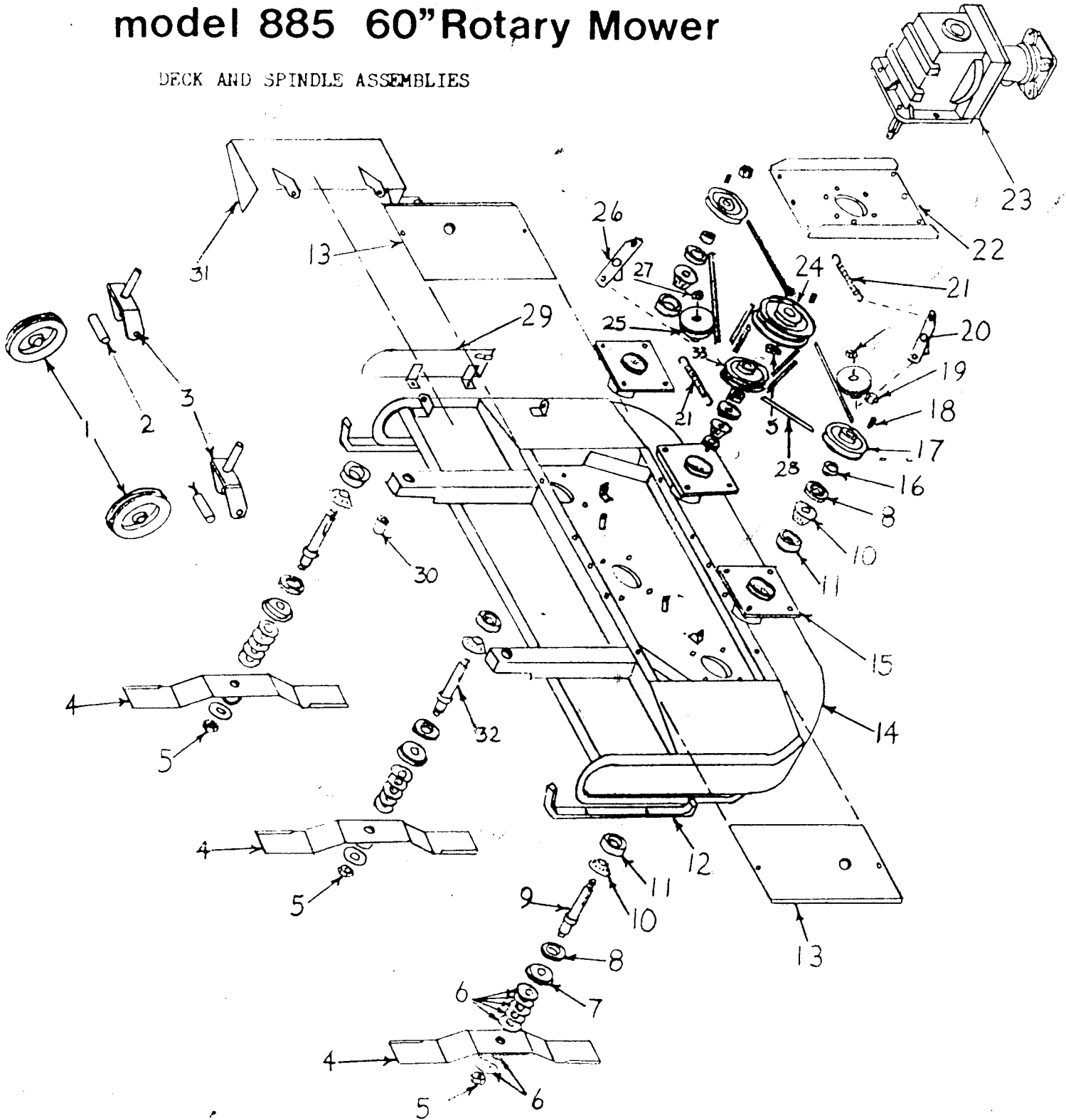
Do not operate the mower when barefoot or wearing open sandals. Always wear substantial footwear and eye protection.

Never direct discharge of material toward bystanders nor allow anyone near equipment while in operation.

Do not change the engine governor settings or overspeed the engine.

United Farm Tools model 885 60" Rotary Mower

DECK AND SPINDLE ASSEMBLIES

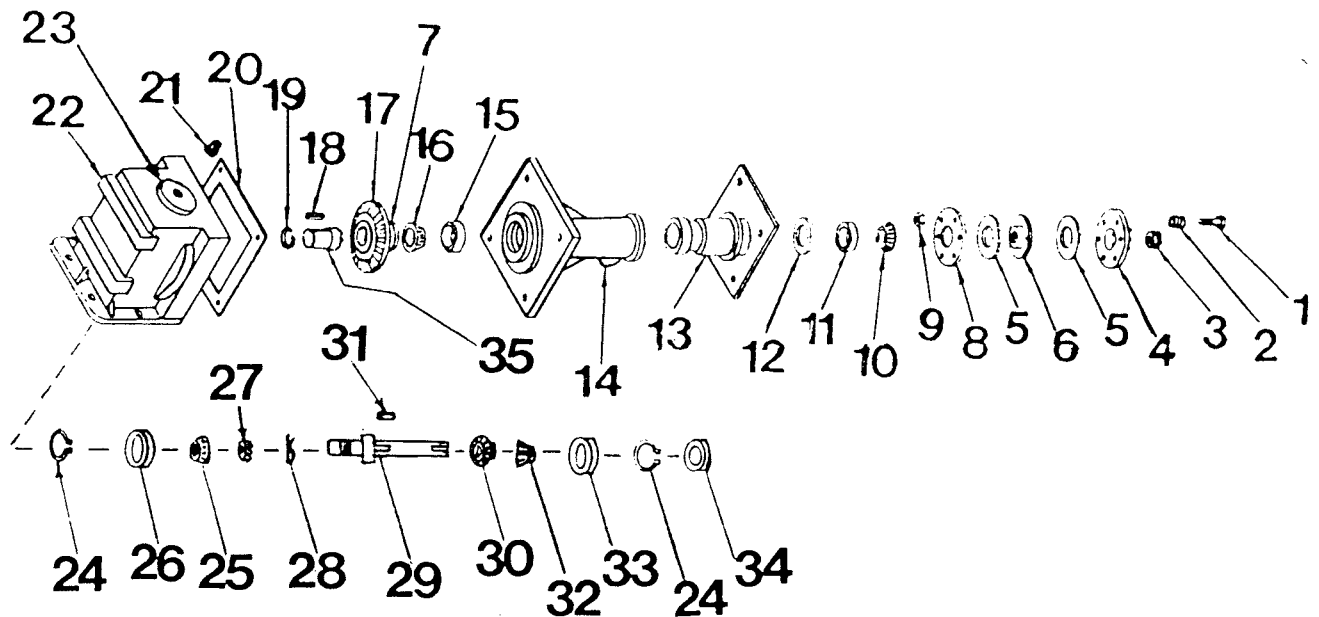


10	REVISIONS	LIMITS ON DIMENSIONS UNLESS OTHERWISE SPECIFIED	NO. REQD.
15			1
20		FRACTIONAL $\pm 1/32$	DECIMAL $\pm .010$
25	MATERIAL	TITLE	MODEL
30		60" Deck & Spindle Assemblies	885
35		UNITED FARM TOOLS, INC.	DRAWING NO.
40	DRAWN <i>GAB</i> CHKD. APPVD.	SOUTH CHARLESTON, W. VA. 25309	
60	SCALE <i>N.T.S.</i> DATE <i>6-30-93</i>		

-- Deck and Spindle Assemblies --

<u>Item #</u>	<u>Part #</u>	<u>Qty.</u>	<u>Description</u>
1	1254	2	Wheel
2	1255	2	Wheel spacer
3	1264	2	Caster fork weldment
4	1275	3	Blade
5	1208	6	Jam nut
6	1269	15	Blade spacers
7	1268	3	Grass guard, spindle seal
8	1263	6	Oil seal, spindle drive
9	1260	2	Spindle drive, Serial #'s up to 13000
	1288	2	Spindle drive, Serial #'s 13000 and above
10	23129	6	Bearing, cone
11	23130	6	Bearing, cup
12	1521	2	Skid
13	1505/1506	2	Belt guard
14	1500W	1	60" Deck weldment
15	1251W	3	Mount, bearing housing
16	1518	1	Spacer, left spindle
	1519	1	Spacer, right spindle
	1520		Spacer, center spindle
17	1510		Sheave R/L
18	14043	3	Key
19	17249	2	Slotted hex nut, serial #'s up to 13000
19	1208	6	Jam nut
20	1515W	1	Belt tightener, left
21	1259	2	Extension spring
22	1253	1	Channel, deck mount
23	1278	1	Gear box assembly
24	1512	1	Drive pulley, 2 groove
25	1513	2	Idler
26	1514W	1	Belt tightener, right
27		10	3/8 lock nut
28	1501	2	belt
29	1252W	1	Door, discharge
30	810	4	Bushings, wheel spindle
31	1502W	1	Grass discharge
		4	1/8 NPT pipe plug, Serial #'s up to 13000
		2	1/4-28 Thd. pipe plug, shaft #1288, Serial #'s 13000 & above
		22	3/4 flat washers, plt.
		8	3/8 x 1 carriage bolt
		13	3/8 x 1 HH cap screw - Gr 5
		4	3/8 flat washers plt.
		2	3/8 x 1 1/2 HH cap screws - Gr 5
		2	3/8 HH Nuts
		3	3/8 ESNA Nuts
		12	3/8 split lockwashers
		4	5/16 x 1 HH cap screw
		4	5/16 split lockwasher
		6	1/2-13 x 1 HH head cap screw - Gr 5
		2	1/2-13 x 4 HH head cap screw
		4	1/2 flat washers
		8	1/2 split lockwasher
		6	1/2-13 HH nuts
		2	1/8 x 1 1/2 cotter pin
32	1504	1	caster spindle shaft
33	1511	1	middle pulley sheave

UNITED FARM TOOLS MODEL 885 DRIVE ASSEMBLY



PARTS LIST - Model 885 Drive Assembly

Item #	Part #	Qty.	Description	Item #	Part #	Qty.	Description
1	1122	6	5/16-24 HH Cap Screw	26	801	2	Bearing, Cup
2	1121	6	Spring	27	1266	1	Slotted hex nut
3		1	5/8-18 Esna nut	28		1	1/8xl $\frac{1}{2}$ cotter pin
4	1117	1	Drive dog	29	1280	1	Shift
5	1120	2	Clutch lining	29	1288	2	Shift
6	1119	1	Drive plate	30	17057A	1	Driven gear
7	1241	1	Oil seal	31	14043	1	Key
8	1118	1	Back plate	32	1285	1	Bearing, cone
9		6	5/16-24 Esna locknut	33	1277	1	Spacer, use with #1280. No spacer req'd with shaft #1288
10	23129	1	Bearing, cone	34	1279	1	Seal, use with #1277 spacer & #1280 shaft
11	23130	1	Bearing, cup	34	1283	1	Seal, use with #1288 shaft
12	1240	1	Oil seal			4	1/2-13xl $\frac{1}{4}$ HH cap screw
13	1201	1	Inside swivel casting			4	1/2 lockwasher
14	1202	1	Outside swivel casting	35	1203	1	1/8 NPT grease ftg.
15	14350	1	Bearing, Cup			1	Horizontal drive shaft
16	14349	1	Bearing, Cone				
17	17058A	1	Drive gear				
18	17163	1	Key				
19	100-211	1	Retaining ring				
20	1215	1	Gasket				
21		2	3/8 NPT pipe plug				
22	1278	1	Gear housing				
23	3180	1	Hole plug				
24	17086A	2	Retaining ring				
25	14947	1	Bearing, Cone				